



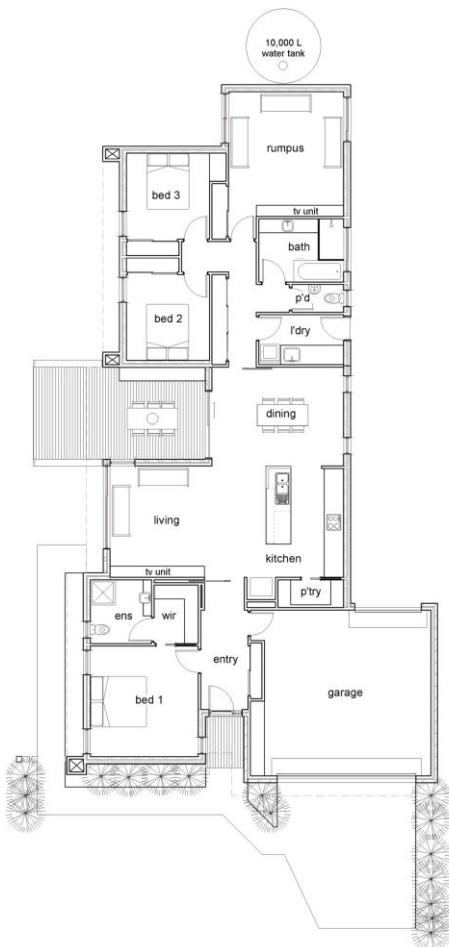
# habitat

8 star energy efficient homes

# h1



BEAUMONT CONCEPTS  
Building Design



### Dimensions

Overall length: 25.69m

Overall width: 13.37m

Total living area: 173.76m<sup>2</sup> or 18.70sq

Total deck area: 21.05m<sup>2</sup> or 2.3sq

Total garage area: 43.58m<sup>2</sup> or 4.7sq

### 8 Star Inclusions

- Passive solar design
- Double glazed windows
- Earthwool insulation
- Insulated concrete slab
- 10,000 water tank
- Solar hot water
- 1.72Kw Solar electricity system

© Beaumont Concepts.

The Drawings, designs & specifications and copyright therein are the property of Beaumont Concepts P/L and must not be used copied or reproduced wholly or in part without the express written permission of Beaumont Concepts. Construction Price dependent on individual site constraints. POA

BEAUMONT CONCEPTS  
Building Design



53 Graham St. Wonthaggi Vic 3995

Phone: 03 56725196

[www.beaumontconcepts.com.au](http://www.beaumontconcepts.com.au)